



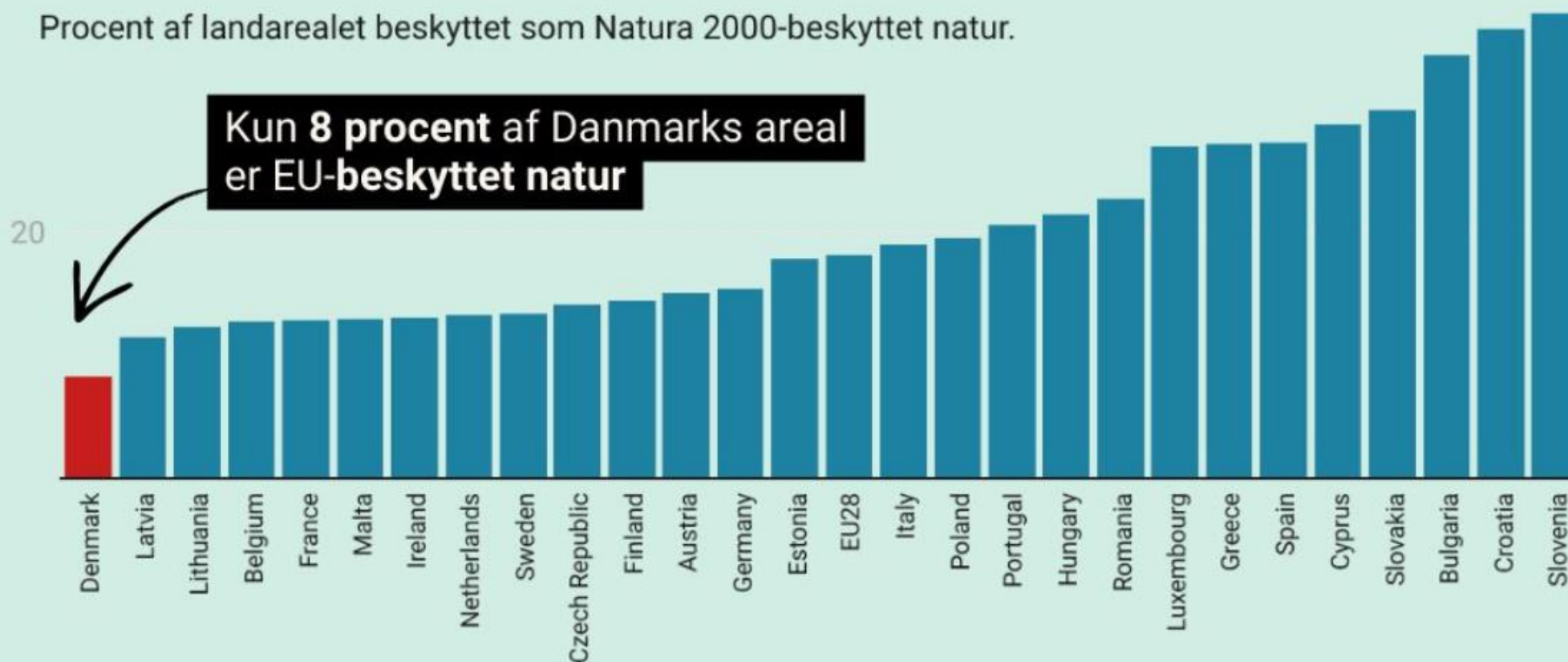
# Livestock in Ecological Restoration in Denmark

# EU (2030): 30% wild, protected nature

## ...og helt i bund på beskyttet natur

Kilde: Eurostat (2024)

Procent af landarealet beskyttet som Natura 2000-beskyttet natur.



# We are short on animals



Spar 30%

LandbrugsAvisen



## Der bliver brug for 300.000 kødkvæg – men Danmark har kun 50.000

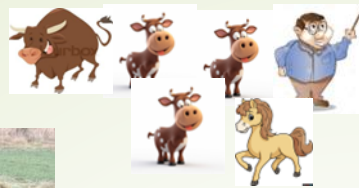
Formand for Dansk Kødkvæg, Per Lyngø Laursen, maner til besindighed: Behold avlsdyrene – de bliver guld værd i takt med krav om mere afgræsning.

KVÆG |

25. NOV. 2025 20:27 Skrevet af: **Frederik Thalbitzer**



eres ammekoantal styrtdykker.



Jylland



Fyn

Ærø



NATURPLEJEDYRLÆGEN  
Døgnavgt 53 832 832



# Rewilding – the Danish way

An ecological restoration approach that aims to restore natural processes and biodiversity by reducing human influence and allowing ecosystems to self-regulate

- ▶ Notifiable disease legislation (blue-tongue, IBR, BVD,...)
- ▶ Compulsory animal identification (ear tags, microchip)
- ▶ Animal welfare legislation
  - ▶ No pain, suffering, fear or permanent disability accepted
  - ▶ Legislation on medicine (registration of use, withdrawal-time, type of drugs)
  - ▶ Adequate Body Condition Score
  - ▶ Shelter provided in winter (or comparable vegetation)
  - ▶ Must be monitored daily (“regularly” if free-roaming cattle older than 6 months)



# Definition of "regularly"

(Det Veterinære Sundhedsråd 2019)

There is no clear-cut definition of "Regularly".

The frequency will always depend on circumstances such as weather, conditions of the area including the possibilities of finding adequately food and water, the actual body-condition-score of the animals, pregnancy and/or hierarchy and group dynamics.

The purpose of monitoring the animals is to assure that they will not be exposed to situations compromising animal welfare.

A monitoring frequency may therefore be sufficient in some conditions but totally inadequate in other conditions.

# Nature-nationalparks (NNP)

Grazing animals form nature

Solid fences prevents all migration in and out

Dispensations from §3 (housing, feeding, watering, caring) and §9 (monitoring frequency) in Animal Welfare Legislation possible

No dispensations from §2 possible (pain, suffering, fear or permanent disability)



# Private rewilding (99% of rewilding in DK)

Grazing animals forms nature

Wired fences or electric collars keeps cattle inside

Wild animals can migrate freely in and out

No dispensations from Animal Welfare Legislation

60+ areas



# Shelter

<https://www.retsinformation.dk/eli/lta/2024/61>

<https://foedevarestyrelsen.dk/dyr/dyrevelfaerd/udegaaende-dyr>

Animals kept outside (>12 hours/day) must have access to shelter or similar natural conditions in the winter or winter-like conditions

- Winter is Dec 1st to March 1st
- Winter-like conditions can occur from Oct 1st to April 30th



# Shelter

<https://www.retsinformation.dk/eli/lta/2024/61>

<https://foedevarestyrelsen.dk/dyr/dyrevelfaerd/udegaaende-dyr>

Animals kept outside (>12 hours/day) must have access to shelter or similar natural conditions in the winter or winter-like conditions

- Winter is Dec 1st to March 1st
- Winter-like conditions can occur from Oct 1st to April 30th

*But in particularly sensitive areas (§3), animal shelters are not allowed*



# Exceptions from shelter

<https://foedevarestyrelsen.dk/dyr/dyrevelfaerd/udegaaende-dyr>

- Hardy breeds on large areas **may be exempt**.

- Cattle:

- Angus
- Galloway
- Scottish Highland
- Hereford



- Horses of pure breeds (min 7/8):

- Islandic Horses
- Konik
- Exmoor
- Przewalsky
- Shetlandponies



# Exceptions from shelter

<https://foedevarestyrelsen.dk/dyr/dyrevelfaerd/udegaaende-dyr>

- Hardy breeds on large areas *may be exempt*.

- Cattle:

- Angus
- Galloway
- Scottish Highland
- Hereford



- Horses of pure breeds (min 7/8):

- Islandic Horses
- Konik
- Exmoor
- Przewalsky
- Shetlandponies



# Tauros

- ▶ Bred solely for nature restoration
- ▶ A mix of 5 different breeds
- ▶ Imported to DK in 2025



# Exceptions from shelter

<https://foedevarestyrelsen.dk/dyr/dyrevelfaerd/udegaaende-dyr>

[https://foedevarestyrelsen.dk/Media/638430662068516759/folder\\_om\\_udegaaende\\_dyr.pdf](https://foedevarestyrelsen.dk/Media/638430662068516759/folder_om_udegaaende_dyr.pdf)

Animals must be accustomed

- thick fur, no hairless spots
- acceptable Body Condition Score

Access to "sufficient" grass-cover and fresh water (also when frosty)

Natural vegetation providing the same protection as a shelter for all animals on the same place and at the same time.

Be aware of type of soil, natural drainage, slopes...



# Cow movements

Jylland



Fyn



 Breeding  
 Law compliance



**NATURPLEJEDYRLÆGEN**  
Døgnavgt 53 832 832

Cows are not alone....



# Body Condition Score

Godt huld	Knap middel	For tynd
<p>Hoftehjørnerne er dækket af fedt/muskulatur. Kroppen fremstår afrundet. Ryglinjen er lige – ikke krum.</p>	<p>Hoftehjørnerne er mere fremstående. Kroppen fremstår noget kantet. Eventuelt skimtes konturen af ribbenene, men disse er dækket af fedt/muskulatur.</p>	<p>Skarpe hoftehjørner og sædebensknuder. Tydelige og fremtrædende tværtappe. Ofte udhuling omkring haleroden. Eventuelt krum ryg.</p>
		
		



# Supplementary feeding

- Not allowed on §3-areas  
(unless specific permission is obtained)
- Not wanted because:
  - Animals starts reaching out for people
  - Change eating habits, often stops or decreases search for food
  - Change their movements, often stays in feeding area
  - Change defecation-habits. Dung gathers on smaller areas, where nutrients increases and vegetation are altered

# Is reaching out to humans a problem?

**71-årig kvinde stanget af kronedyr i midtbyen: Politiet kommer med advarsel**

Kvinden mener selv, at det var hende, der blev ramt af kronedyret, da det løb på hende, som hun var på vej til arbejde i midtbyen.



Kære Gladsaxe Kommune. Hvorfor er det lige at de her tre okser skal have så meget plads? Det er pænt svært at komme igennem, når de står så tæt på indgangen, og at det er vores ansvar at holde mindst 30 meters afstand!

Hvorfor finder I ikke et mere egnet sted til dyrene, så vi andre vi kan have vores bevægelsesfrihed her på Radiomarken?



👍 66    💬 22    ➡ 3





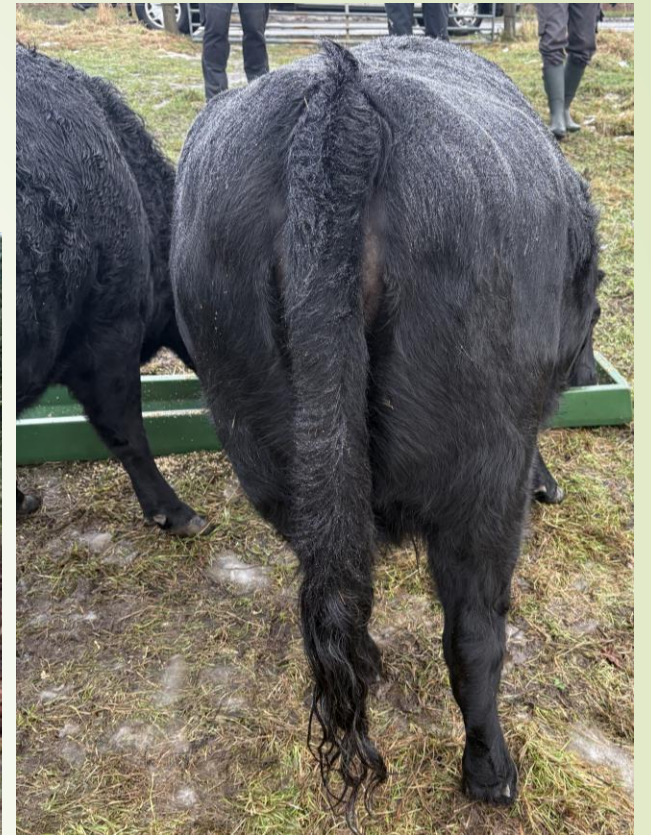
# Supplementary feeding – how to do it

- **Must be kept strictly "supplementary"** so the animals maintain the desire to search for food *as long as sufficient food is available*.
- **Food shall be offered at the same time every day** so the animals will only come to the feeding area around feeding time and leave when the food has been eaten. If feeding time is irregular, the animals will stay all day at the feeding area and stop searching for the food available in the area.
- **Alternatively, the feeding areas should vary**, but make sure that the animals can find the food supplements
- **Animals must not attach feeding to humans** so they starts reaching out for humans in public areas
- **Excess food must be removed**
- When supplementary feeding is no longer needed, the feeding should be gradually decreased.

# Check the surroundings



Also look at the animals





# Behaviour

- Social structures
- Feeding
- Resting
- Interaction with humans
- Alertness
  
- One or more animals acting differently
- Are all animals accounted for?



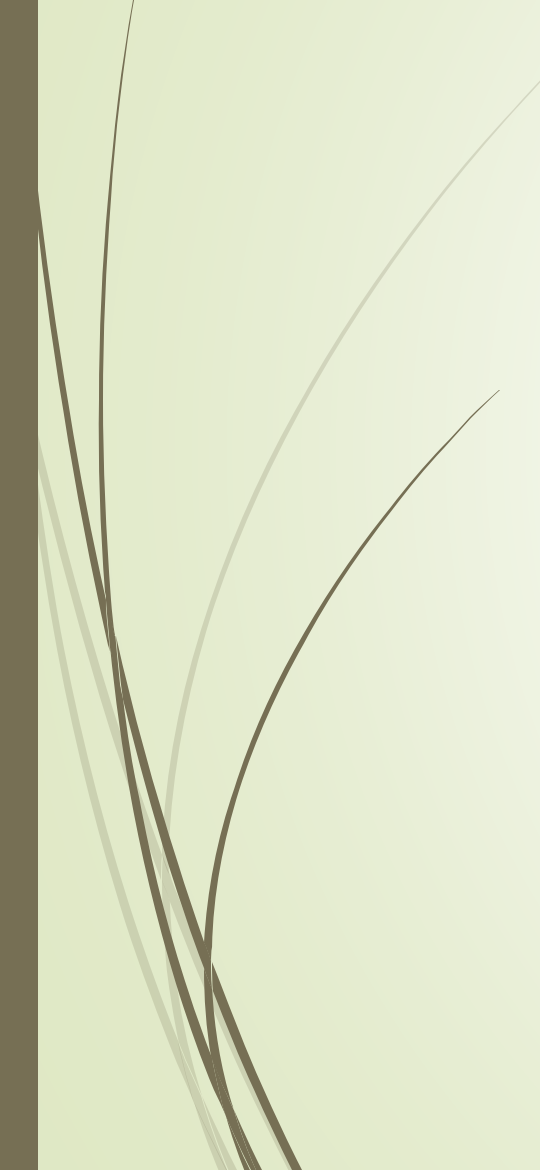
# General condition

- Behaviour
- Appetite
- Weight loss
- Movements
- Clinical signs
- Pain

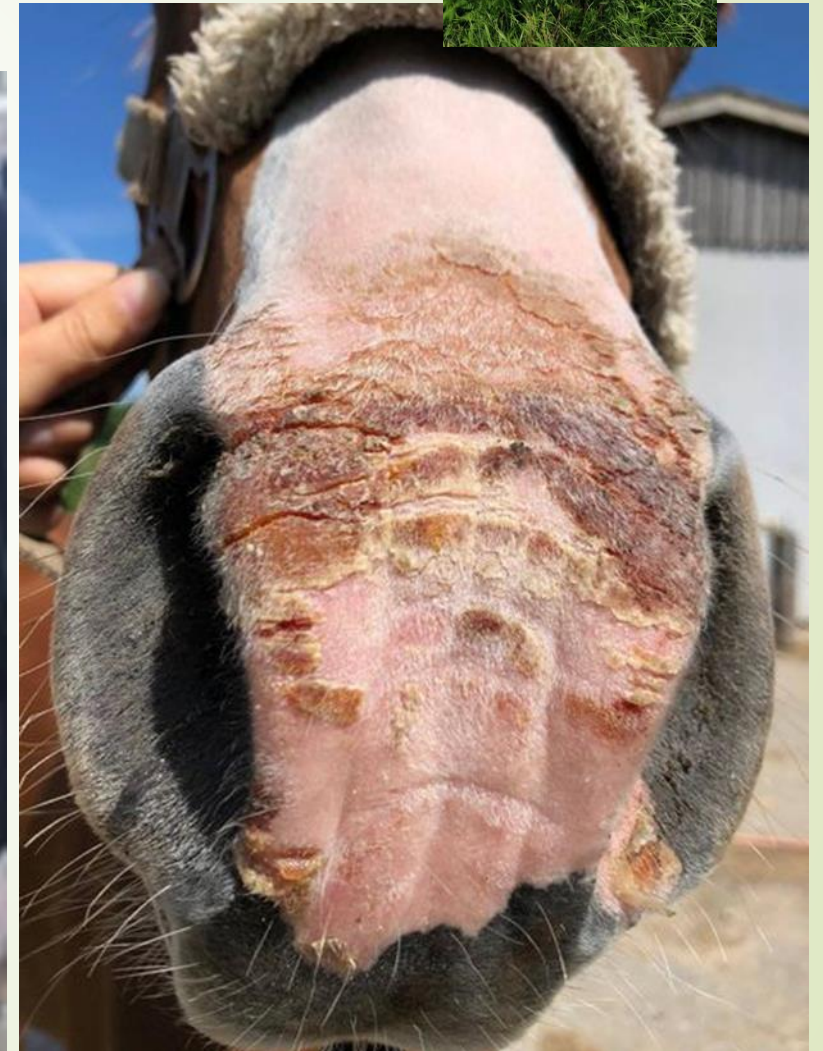


Do they keep up with the herd?





# Poisonous plants



# Management can solve the problem



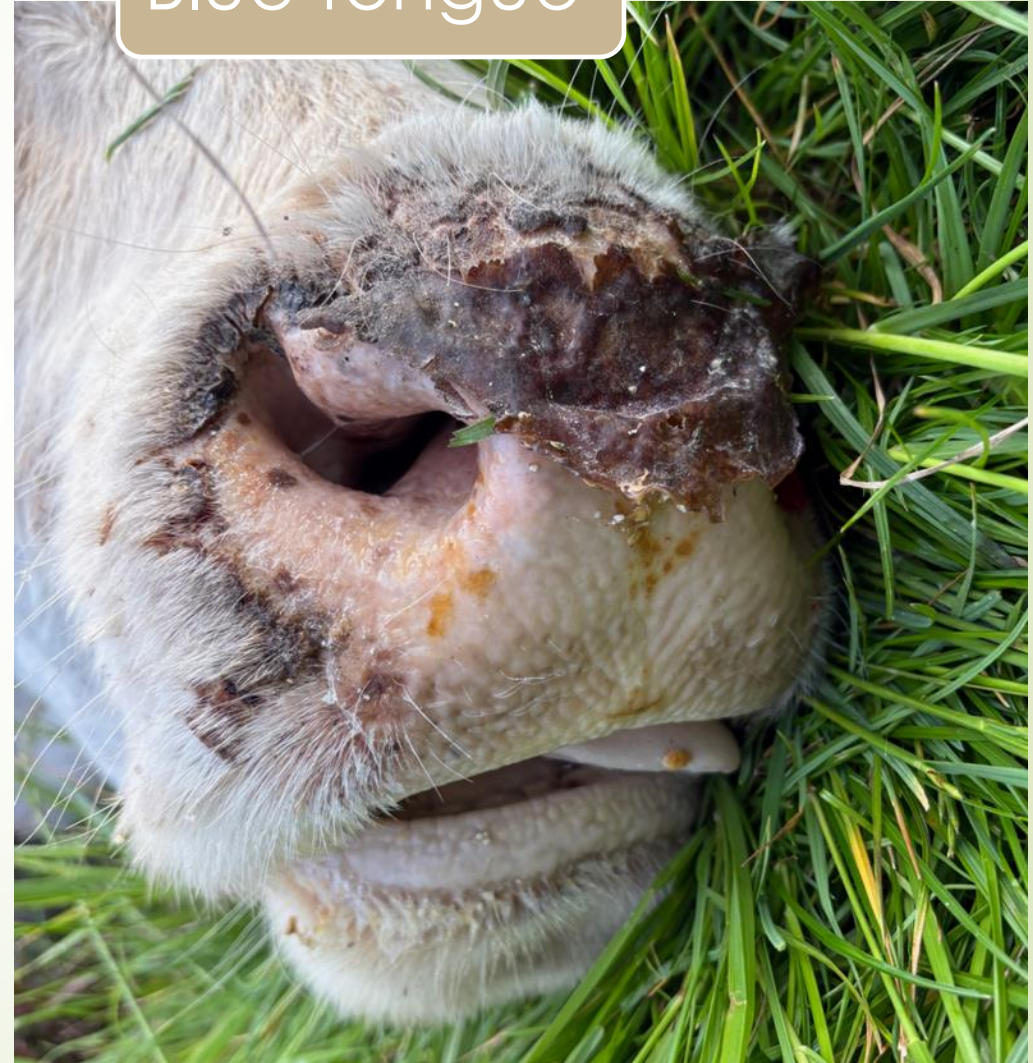
# Other causes ?



Anaplasma



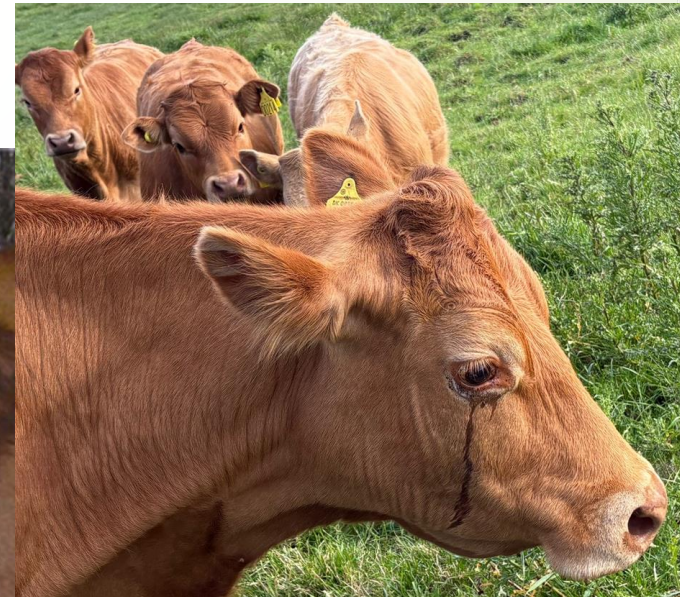
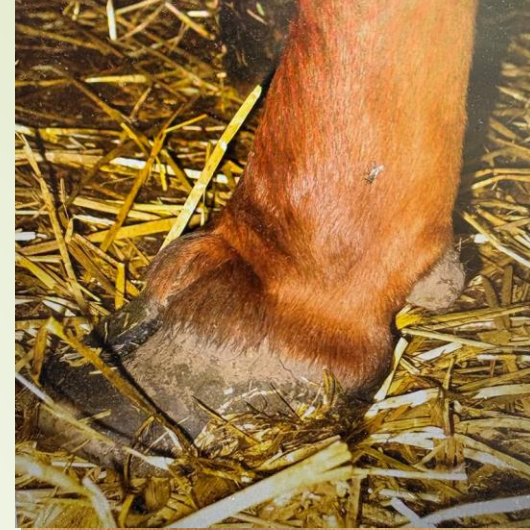
Blue tongue



# Blue tongue

Notifiable disease

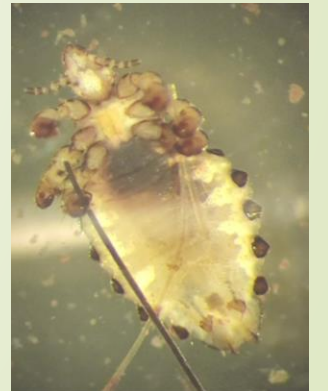
Symptoms from none to serious (deadly)



# Ectoparasites



# Ectoparasites



# Veterinary care

- Kept to an absolute minimum because it is invasive and risky
- Strict regulations on medicine use
- Use of medicine is an issue of major concern due to residual concentrations in urine / feces
- The veterinarian have only one chance of success
  - Immobilization in the field
  - Examination, sampling
  - Treatment or euthanization
  - Follow-up is normally non-invasive



## When do we handle the animals?

- Minor problem, general condition unchanged
  - Monitoring and frequent evaluation
- Slightly affected general condition
  - Welfare gain compared to potential harm from handling / immobilization
- Affected general condition/pain (§2)
  - Treatment followed by monitoring
  - Euthanization

# Temporary handling facilities

- ▶ Can be moved to other areas
  - ▶ Are only present when needed
  - ▶ Can be designed individually and modified for the exact purpose
- 
- ▶ Scheduled veterinary examination/treatment
  - ▶ Eartagging/microchipping
  - ▶ Separation and grouping
  - ▶ Transport



# Medical immobilization

Emergency responses  
Castration  
Ear tagging  
Blood sampling  
Scientific purposes



# There is always someone watching you....

Man kan ikke skjule noget for de lokale fuglekiggere!



Klarer i den?



Vi er ok. Fik bare lyst til at nærstudere terrænet på østfolden... 🤔🤔🤔




Foto: Preben Berg



# Hoof trimming

- A welfare problem or a cosmetic problem?
- Is the animal welfare gain reasonable when considering the potential harm during immobilization and treatment





# Self-trimming (Popielno Research Station, Polen)

- 108 semi-feral konik over a 70 year period (Górecka-Bruzda et al, 2020)
  - Hoof growth is slower in udegående konik and depends on season (food availability), movement pattern and terrain
  - Horn breaks off when it becomes too long
  - Before breaking off, cracks of 1-3 cm appears on hoof wall
  - After 1-3 months, the hoof looks normal again
  - In most horses, no lameness were observed
- 