

A close-up photograph of a cow's head, focusing on its eye and the area around it. The cow has black and white fur. A yellow identification tag is visible in the upper right corner, with the text 'DK O.' and the number '20'. A semi-transparent teal banner is overlaid across the middle of the image, containing the title and speaker information.

‘Pinkeye - is it a problem in Denmark?’

Lars Pedersen, DVM

SEGES



Pinkeye (IBK) etiology

Major causative agent:

- *Moraxella bovis*
- (*Moraxella bovoculi*)

Other frequently isolated agents:

- *Mycoplasma* spp.

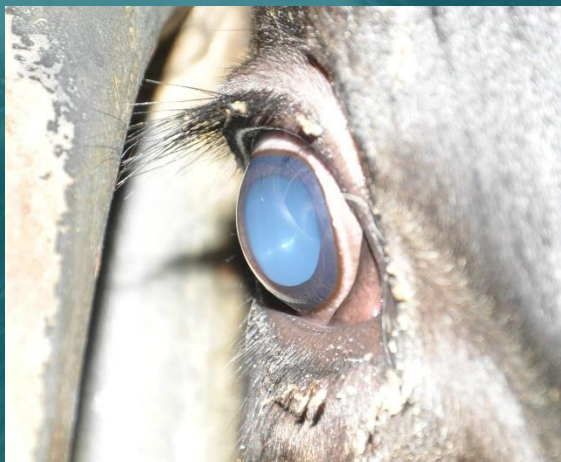
In chronic cases

- Diversity of virus and bacteria

Clinical Signs



Stage 1



Stage 2



Stage 3



Stage 4

Methods

Simple randomly selected

- 250 dairy herds
- 100 veal calf herds

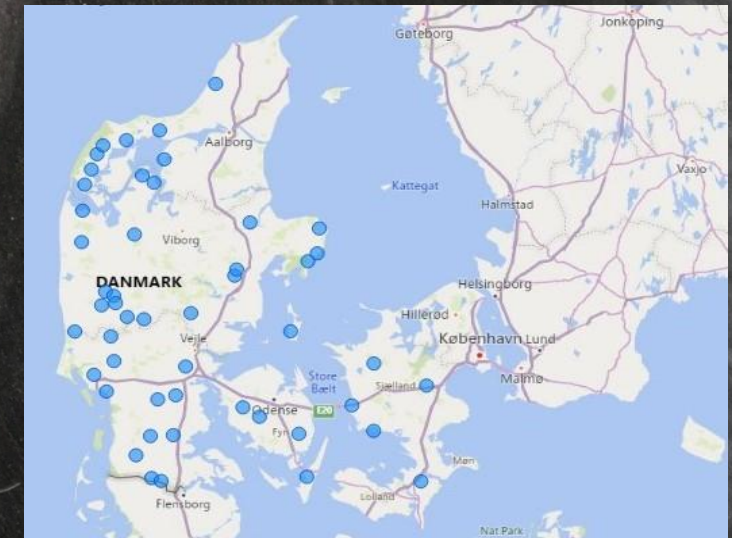
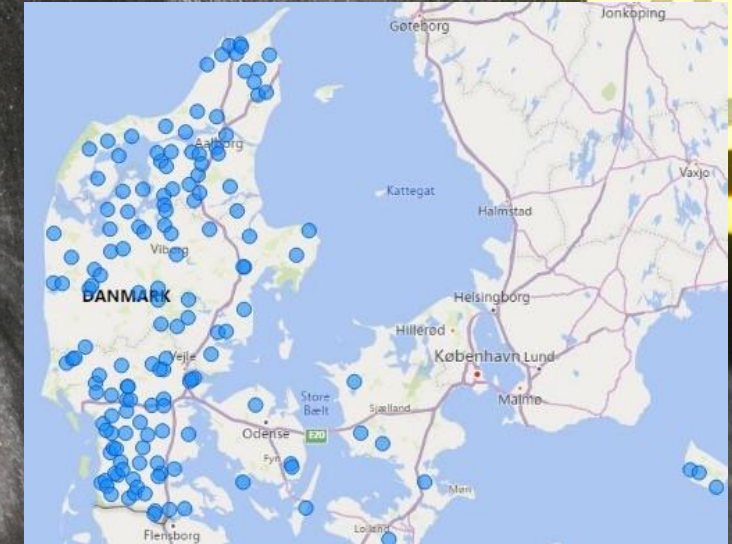
Contacted in autumn 2019

199 respondents

- 150 dairy farmers
- 49 veal calf producers

*“you have seen Pinkeye,
how was it expressed?”*

*“you have heard about
Pinkeye, what have you
heard about Pinkeye?”*



Results

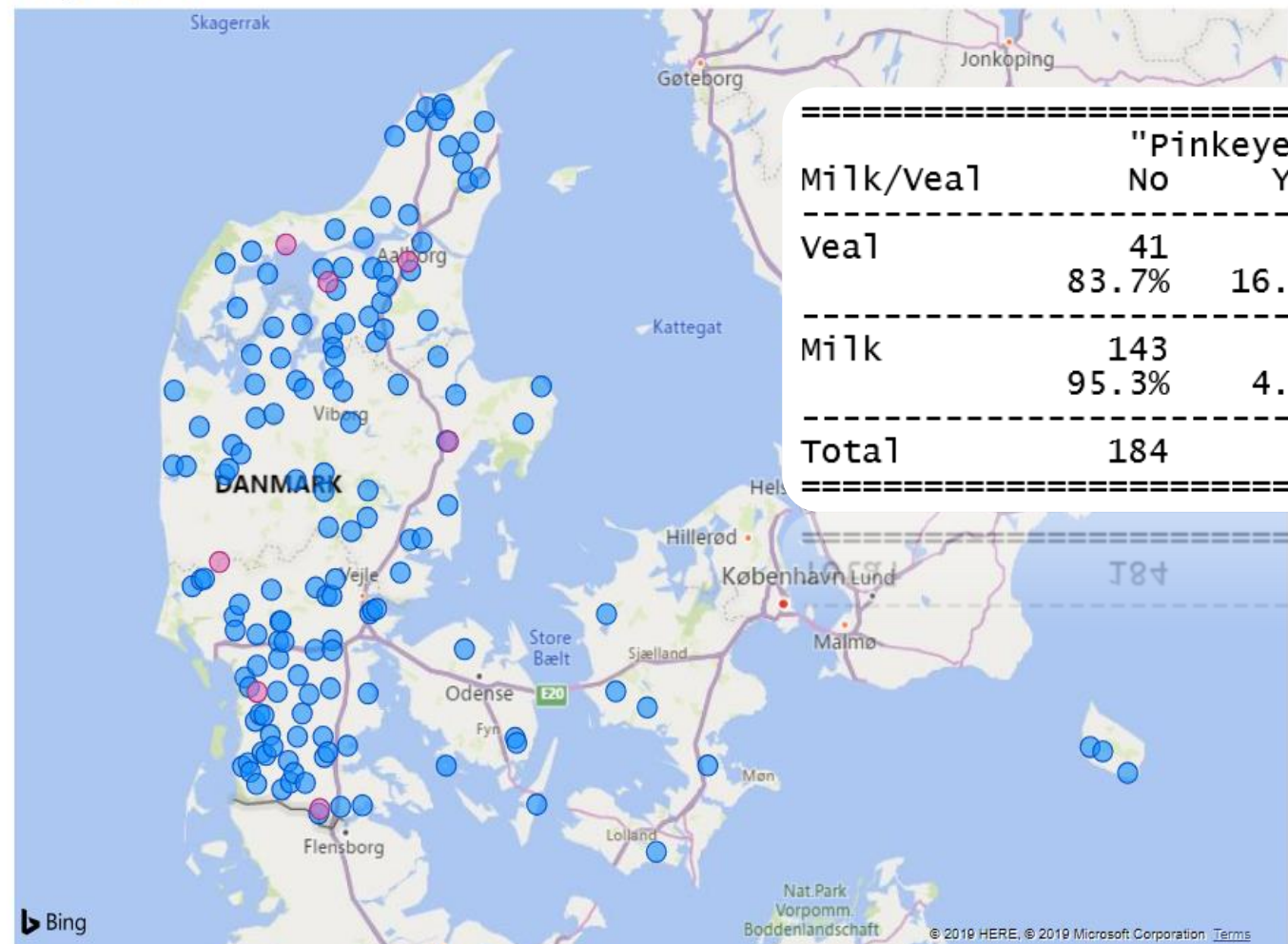
29 herds had observed Pinkeye within a year

Pinkeye problem herds > 5 clinical cases (15 herds)

- 4.7 % [1.3%;8.0%]
for dairy herds

Milk producing herds (Pinkeye > 5 animals)

Pinkeye>5 ● No ● Yes



Milk/Veal	"Pinkeye>5"		Total
	No	Yes	
Veal	41 83.7%	8 16.3%	49 24.6%
Milk	143 95.3%	7 4.7%	150 75.4%
Total	184	15	199

Results

29 herds had observed Pinkeye within a year

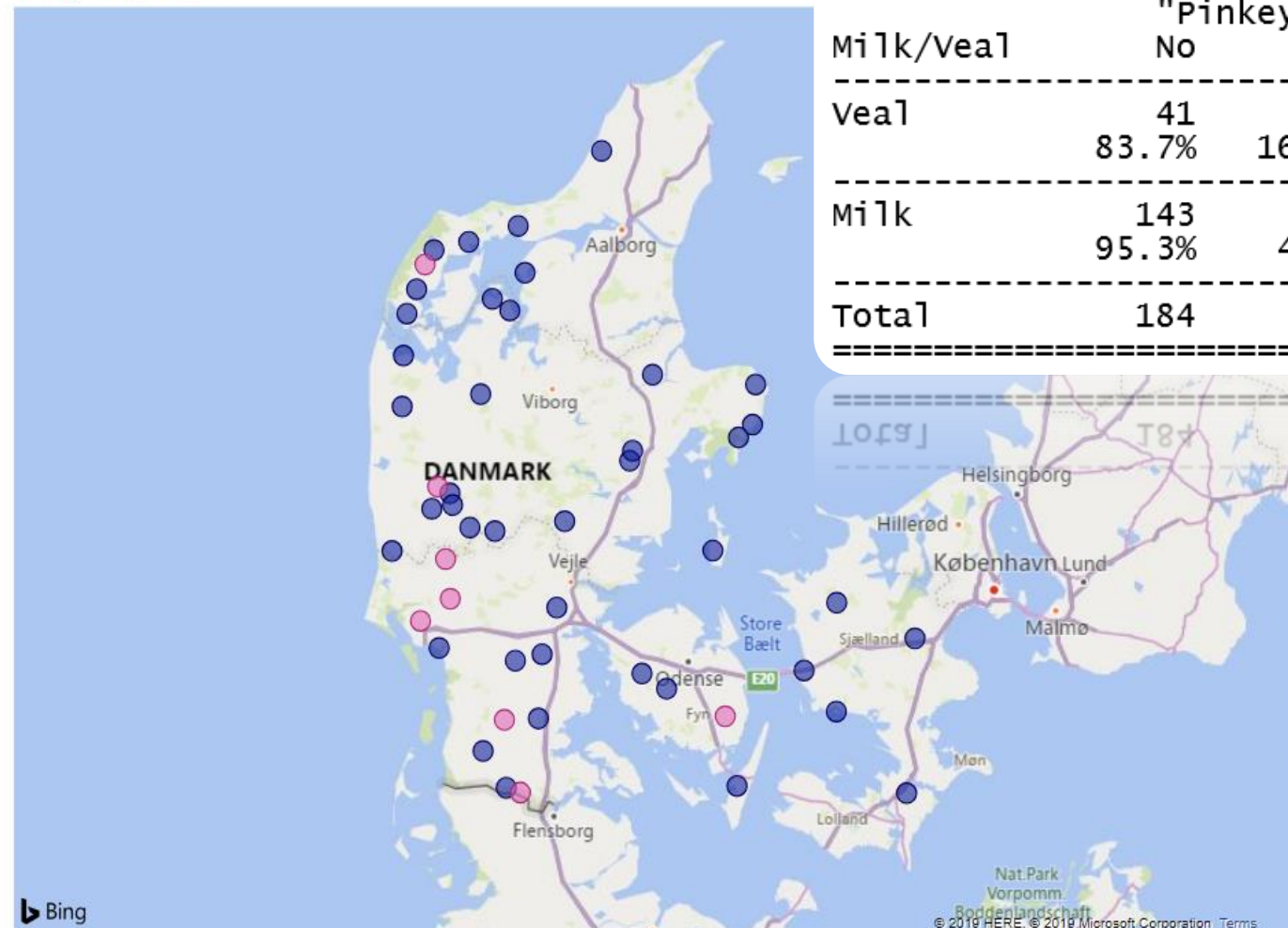
Pinkeye problem herds > 5 clinical cases (15 herds)

- 4.7 % [1.3%;8.0%] for dairy herds
- 16.3 % [6.0%;26.7%] for veal calf herds

Positive relationship with herd size for veal calf

Veal herds (Pinkeye > 5 animals)

Pinkeye>5 ● No ● Yes



Milk/Veal	"Pinkeye>5"		Total
	No	Yes	
Veal	41 83.7%	8 16.3%	49 24.6%
Milk	143 95.3%	7 4.7%	150 75.4%
Total	184	15	199

Results

33.3% of Pinkeye problem herds had Mycoplasma cases during the past year

10,9 % in the group without Pinkeye problems

Significant positive relation ($p=0.02612$, Fisher's Exact test) between Pinkeye problems and Mycoplasma observations

A count for both Milk producing and veal herds, Pinkeye>5:
=====

"Pinkeye>5"	Mycoplasma		Total
	Yes	No	
No	20 10.9%	164 89.1%	184 92.5%
Yes	5 33.3%	10 66.7%	15 7.5%
Total	25	174	199

=====

DK 03
209

A count for Milk producing herds, Pinkeye>5:

"Pinkeye>5"	Mycoplasma		Total
	Yes	No	
No	13 9.1%	130 90.9%	143 95.3%
Yes	2 28.6%	5 71.4%	7 4.7%
Total	15	135	150

A count for Veal herds, Pinkeye>5:

"Pinkeye>5"	Mycoplasma		Total
	Yes	No	
No	7 17.1%	34 82.9%	41 83.7%
Yes	3 37.5%	5 62.5%	8 16.3%
Total	10	39	49

Discussion/Conclusion

Sample size too small

Higher occurrence of Pinkeye
in veal calf herds

Link between occurrence of Pinkeye
and mycoplasma observation

Higher occurrence of Pinkeye
than assumed

Laboratory identification in only 20 %
of the herds with Pinkeye problem

**Higher
occurrence of
Mycoplasma?**

Purchasing?

**Suppressed
immune
system?**

A close-up photograph of a cow's face, showing its eye and a yellow identification tag with the number 209. The cow has black and white fur. A dark teal horizontal band is overlaid across the middle of the image.

Questions?

Mail: larp@seges.dk

SEGES

